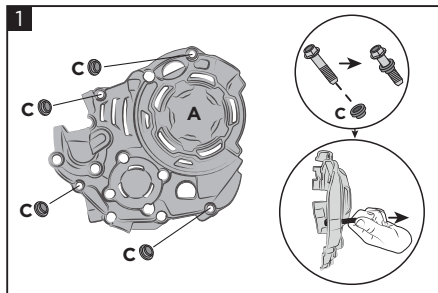
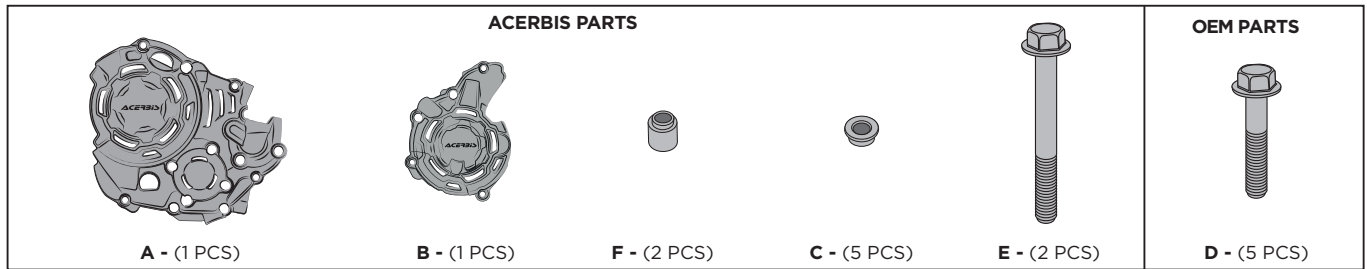
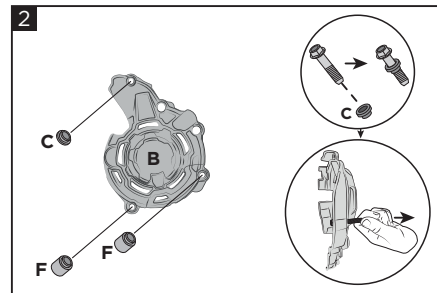


CLUTCH/IGNITION X-POWER HONDA CRF 300L PROTEZIONE FRIZIONE/ACCENSIONE X-POWER HONDA CRF 300L

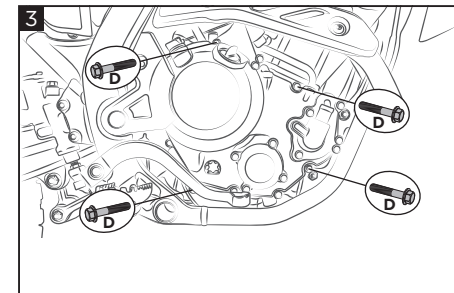
COD. 500009282



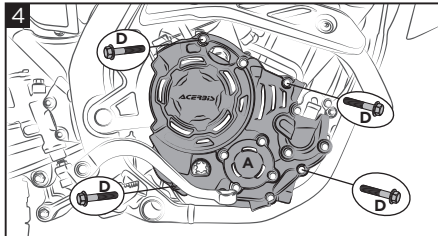
1
Before assembling the X-Power (A), block the bushings (C) inside the protection. In order to ease the mounting, it is recommended to use a screw by inserting it in the bushings. Then pull the screw until the bushings are stuck in their plastic seat. Finally, remove the screw.
Prima di montare l'X-Power (A), bloccare le boccole (C) all'interno della protezione. Per facilitare il montaggio, si consiglia di utilizzare una vite inserendola dal lato interno delle boccole stesse. Poi tirare fino ad incastrare le boccole nelle sedi della plastica ed estrarre la vite.



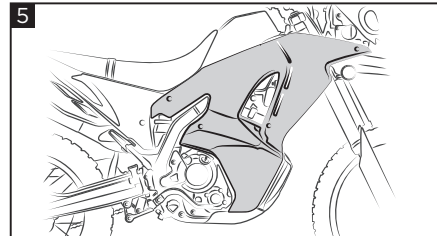
2
Before assembling the X-Power (B), block the bushings (C) and (F) inside the protection. In order to ease the mounting, it is recommended to use a screw by inserting it in the bushings. Then pull the screw until the bushings are stuck in their plastic seat. Finally, remove the screw.
Prima di montare l'X-Power (B), bloccare le boccole (C) ed (F) all'interno della protezione. Per facilitare il montaggio, si consiglia di utilizzare una vite inserendola dal lato interno delle boccole stesse. Poi tirare fino ad incastrare le boccole nelle sedi della plastica ed estrarre la vite.



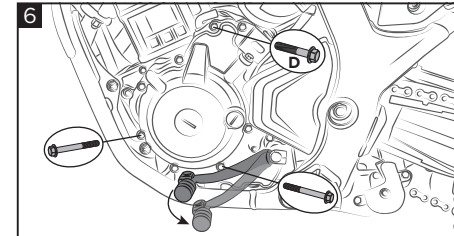
3
Remove the original screws (D) shown in figure.
Rimuovere le viti originali (D) indicate in figura.



4
Mount the X-Power clutch protection (A) with the original screws (D) and bushings (C). Closing torque as reported on the original instructions manual of the bike.
Montare la protezione frizione X-Power (A) con le viti originali (D). Coppia di chiusura come riportato sul manuale originale della moto.



5
ONLY FOR RALLY: Remove the side panel indicated in the figure before assembling the X-Power and reassemble it later.
SOLO PER RALLY: Smontare il fianchetto indicato in figura prima di montare l'X-Power e rimontarlo successivamente.



6
Lower the gear shift by putting the bike into the first gear and remove the original screw (D) and the other two original screws as shown in figure. Place the protection on the engine casing.
Abbassare la leva del cambio (inserendo la 1° marcia) e rimuovere le viti originali (D) e le altre due viti originali come indicato in figura. Appoggiare la protezione sul carter motore.

WARNING!

Use Acerbis' products at your own risk. Check the safety of your device before you ride. Be sure that you follow the instructions for installing the Acerbis' products. Do not ride if there is missing or damaged hardware. If this is the case, take the item immediately back to your dealer. Make sure the throttle and other controls are free every time you ride. Not following these instructions and warnings could lead to interference with the controls, loss of control, and accidents. Acerbis recommends that installation must be done by a licensed mechanic and that only Acerbis' original parts are used during installation. Acerbis makes no guarantees or representations, express or implied, regarding the fitment of its product for any particular purpose. Acerbis makes no guarantees or representations, express or implied, regarding the extent to which its products protect individuals or property from injury or death or damage.

EUROPE
ACERBIS ITALIA S.P.A.
VIA SERIO, 37
24021 ALBINO (BG)
ITALY

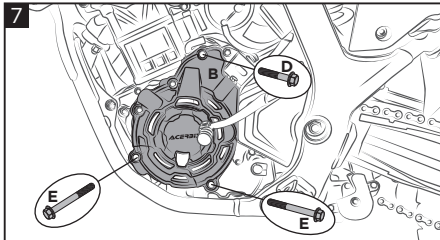
U.S.A.
ACERBIS U.S.A. INC.
MAIL P.O. BOX 2030
SUN VALLEY, ID 83353
SHIP 110 LINDAY CIRCLE
KETCHUM, ID 83340
U.S.A.

UNITED KINGDOM
ACERBIS U.K LTD
UNIT 4 DUNFERMLINE COURT,
KINGSTON, MILTON KEYNES
MK10 0BY
GREAT BRITAIN

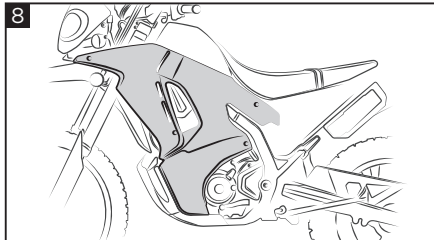
ACERBIS

CLUTCH/IGNITION X-POWER HONDA CRF 300L PROTEZIONE FRIZIONE/ACCENSIONE X-POWER HONDA CRF 300L

COD. 500009282



Mount the X-Power ignition protection (B) with the original screw (D) and the supplied screws (E). Closing torque as reported on the original instructions manual of the bike.
Montare la protezione accensione X-Power (B) con le viti originale (D) e le viti in dotazione (E). Coppia di chiusura come riportato sul manuale originale della moto.



ONLY FOR RALLY: Remove the side panel indicated in the figure before assembling the X-Power and reassemble it later.
SOLO PER RALLY: Smontare il fianchetto indicato in figura prima di montare l'X-Power e rimontarlo successivamente.

WARNING!

Use Acerbis' products at your own risk. Check the safety of your device before you ride. Be sure that you follow the instructions for installing the Acerbis' products. Do not ride if there is missing or damaged hardware. If this is the case, take the item immediately back to your dealer. Make sure the throttle and other controls are free every time you ride. Not following these instructions and warnings could lead to interference with the controls, loss of control, and accidents. Acerbis recommends that installation must be done by a licensed mechanic and that only Acerbis' original parts are used during installation. Acerbis makes no guarantees or representations, express or implied, regarding the fitment of its product for any particular purpose. Acerbis makes no guarantees or representations, express or implied, regarding the extent to which its products protect individuals or property from injury or death or damage.

EUROPE

ACERBIS ITALIA S.P.A.
VIA SERIO, 37
24021 ALBINO (BG)
ITALY

U.S.A.

ACERBIS U.S.A. INC.
MAIL P.O. BOX 2030
SUN VALLEY, ID 83353
SHIP 110 LINDAY CIRCLE
KETCHUM, ID 83340
U.S.A.

UNITED KINGDOM

ACERBIS U.K LTD
UNIT 4 DUNFERMLINE COURT,
KINGSTON, MILTON KEYNES
MK10 0BY
GREAT BRITAIN